

G α_o

Catalog Number: 21015

Gene Symbol: Gnao

Description: Anti-G α_o Rabbit Polyclonal Antibody

Background: Heterotrimeric G proteins are critical cellular signal transducers. G α_o belongs to the G_i sub-family of G proteins that could mediate the inhibition of adenylyl cyclases. Other biochemical and physiological functions of G α_o proteins are being explored.

Immunogen: Recombinant full length protein of G α_o

Tested applications: ELISA, WB, IHC

Recommended dilutions:

ELISA 1:1000-1:5000

WB 1:500-1:2000

Concentration: 1 mg/ml

Host: rabbit

Clonality: Polyclonal

Purity: Purified from serum

Format: Liquid

Storage buffer:

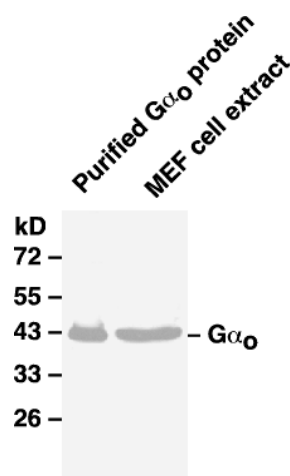
Preservative: no

Constituents: PBS (without Mg²⁺ and Ca²⁺), pH 7.4, 150 mM NaCl, 50% glycerol

Species Reactivity: G α_o antibody recognizes G α_o of vertebrates.

Storage Conditions: Store at -20°C. Avoid freeze / thaw cycles

Western blot:



WB: anti-G α_o pAb

Western blot analysis of G_o proteins.

Whole-cell lysate of MEF cells or purified G α_o protein were used for western blots with the polyclonal anti- G α_o antibody (Cat # 21015).